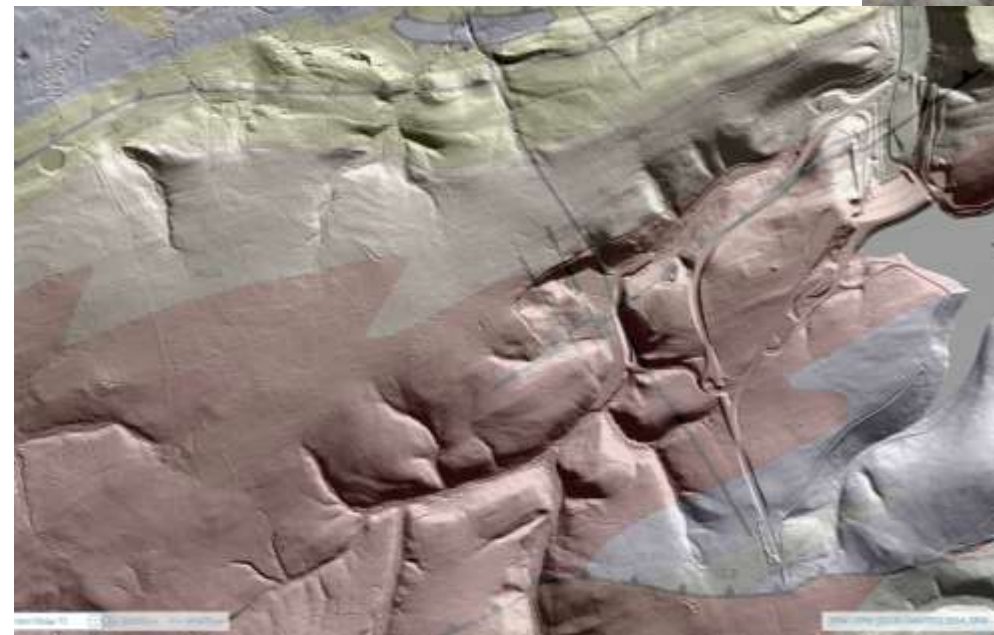
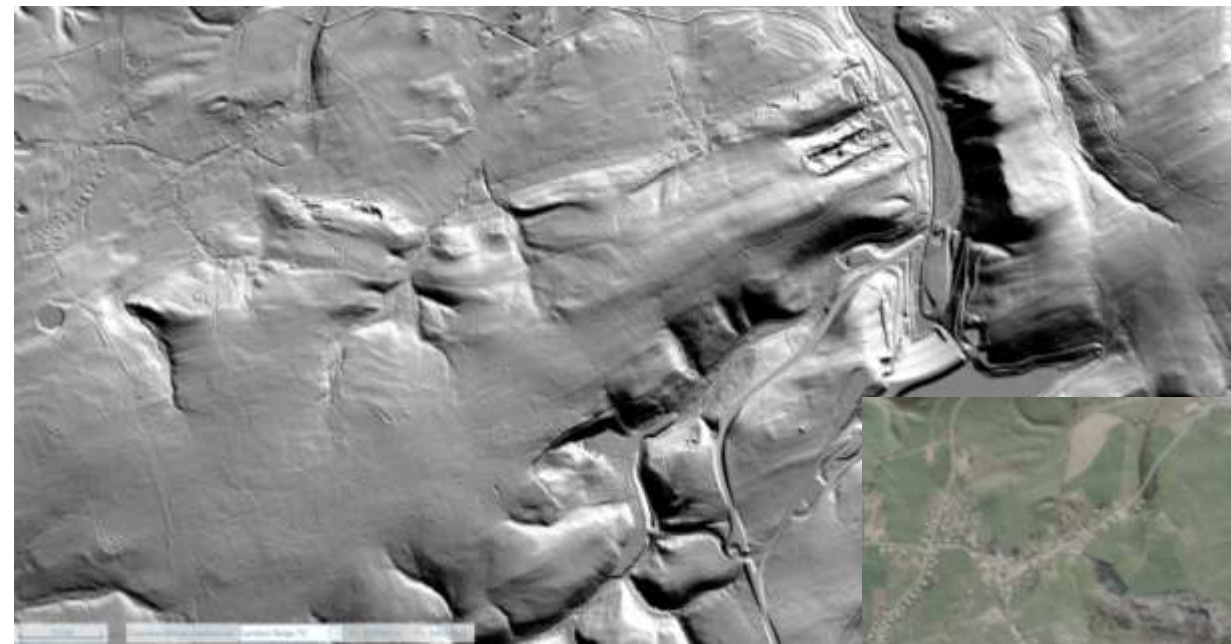
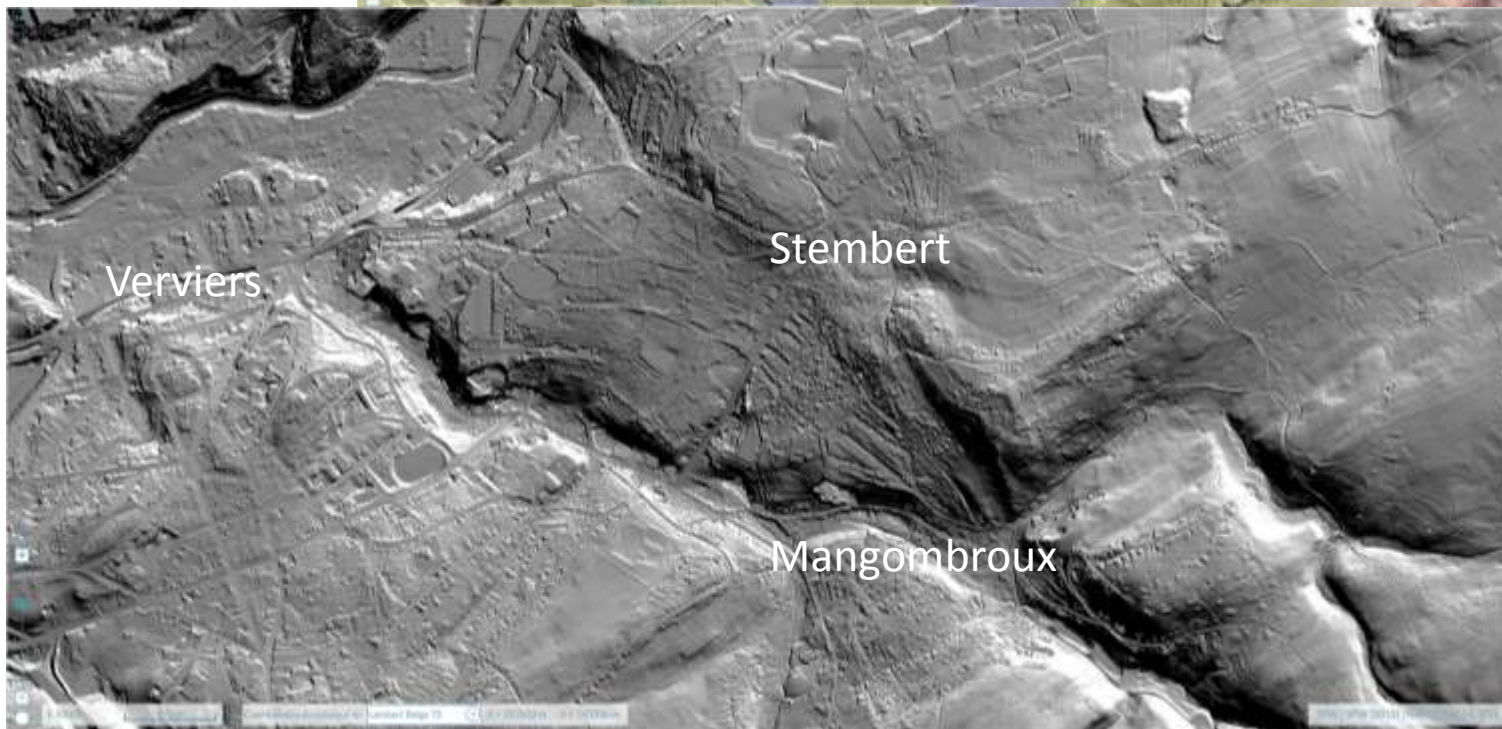
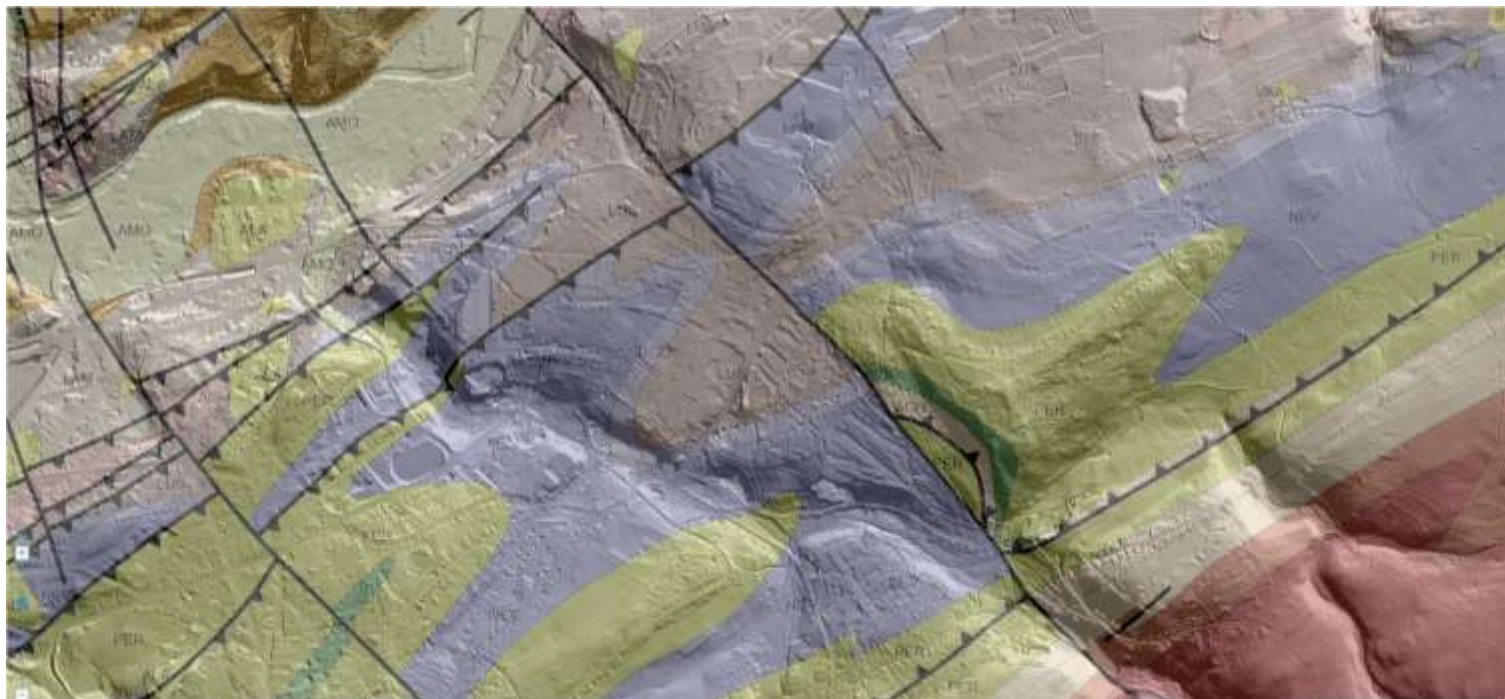
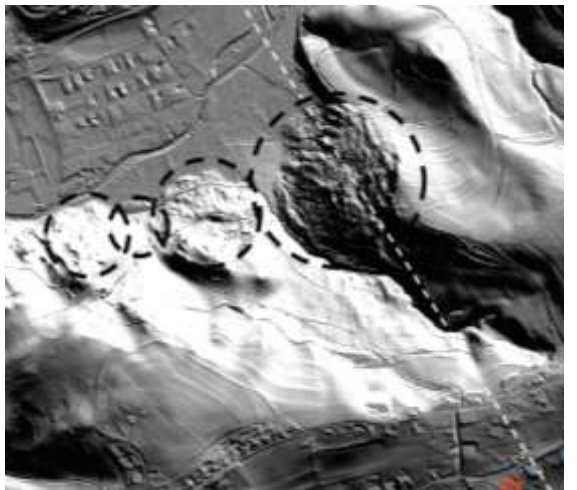
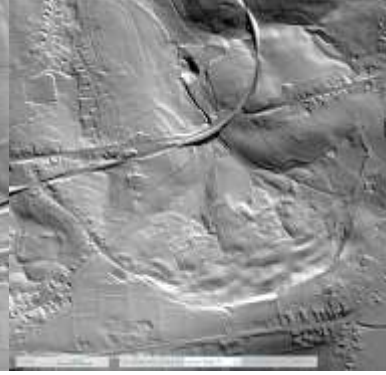
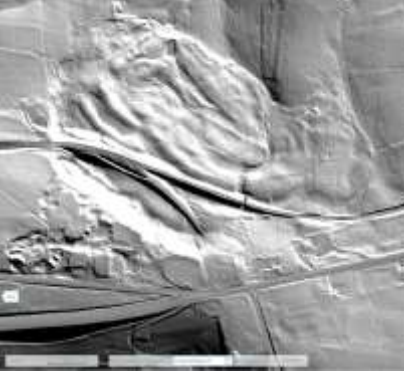
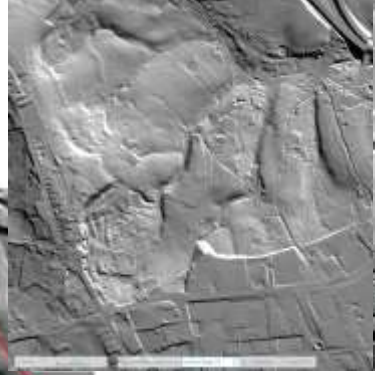
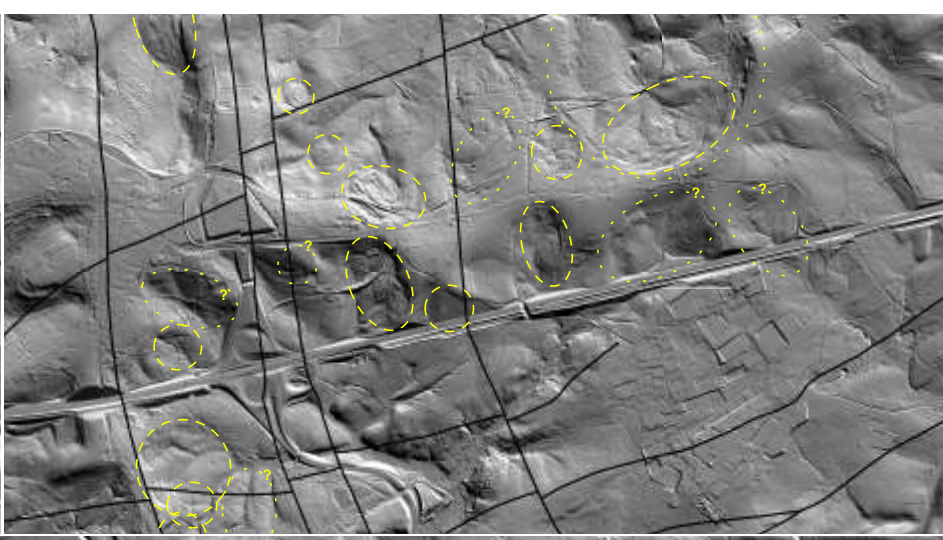
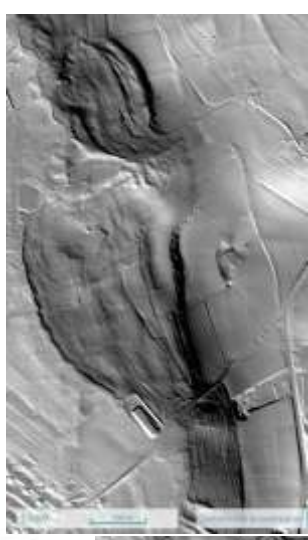
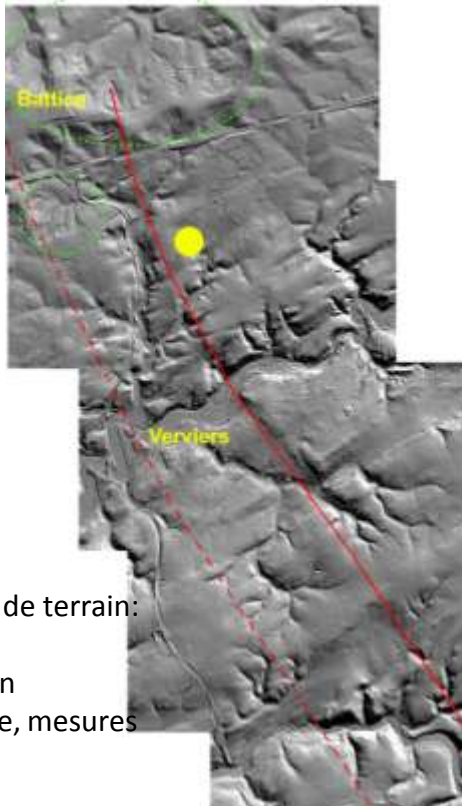


- correction/amélioration des tracés
- informations sous couvert forestier (secteur Gileppe – Limbourg)

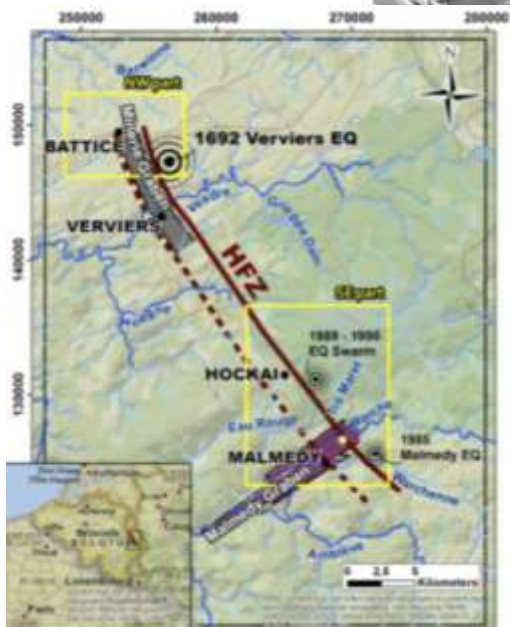


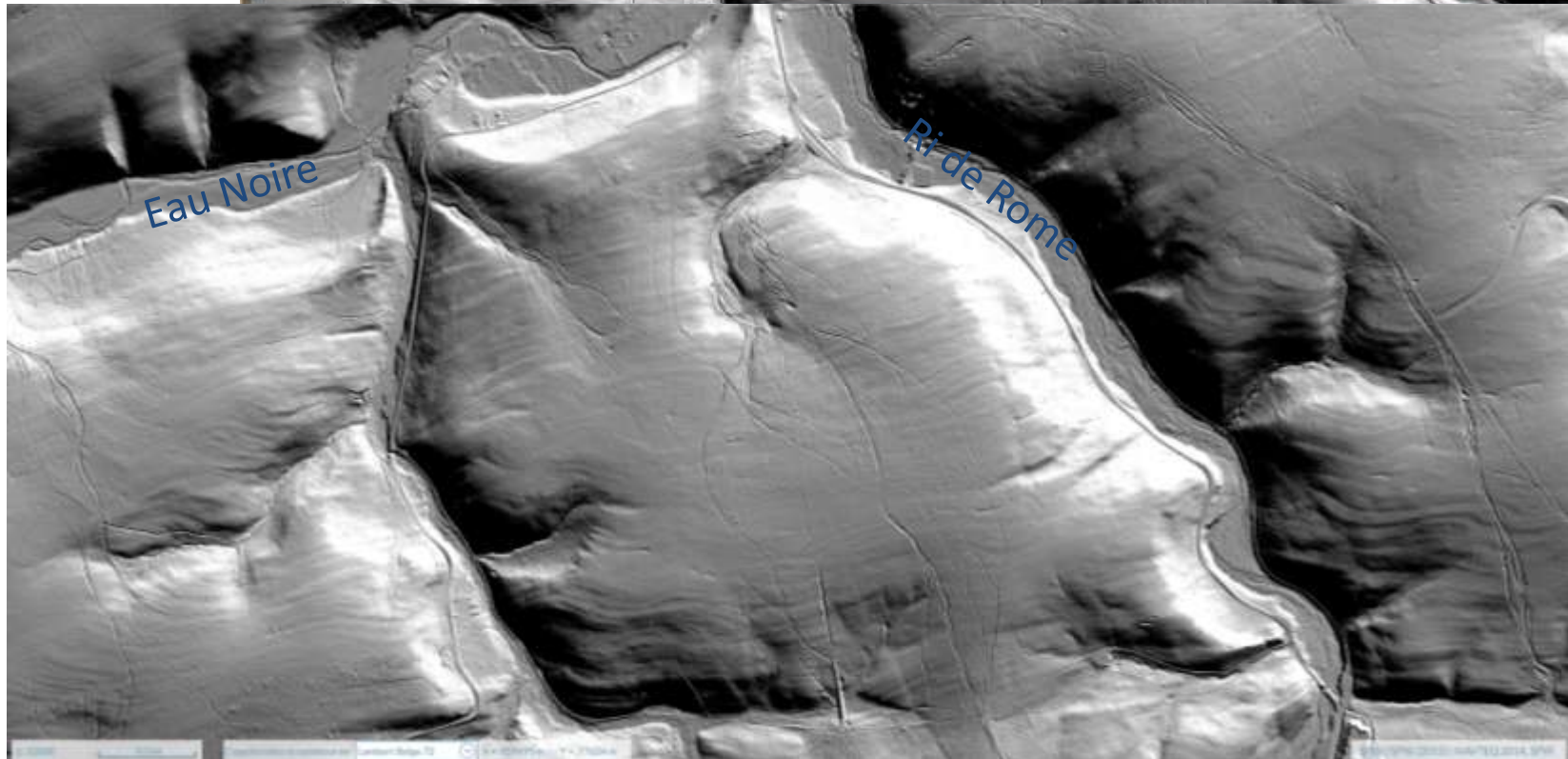
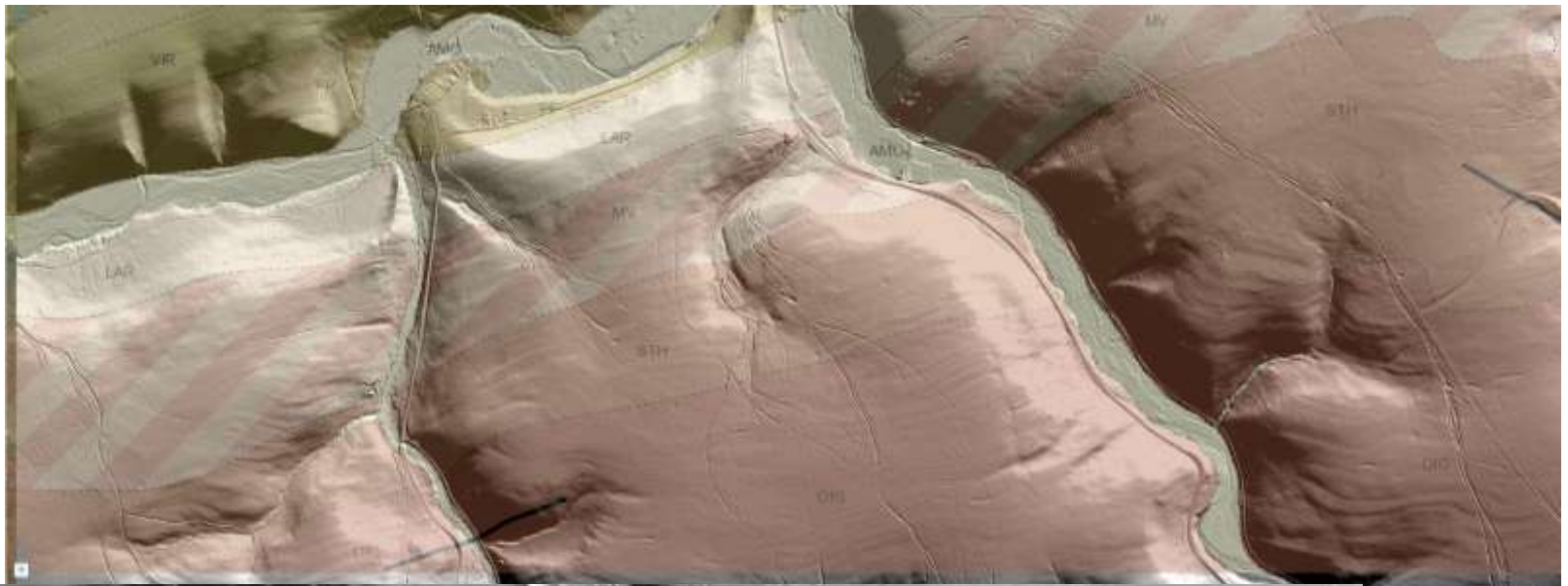
Cartographie des failles actives
(Verviers 1692)

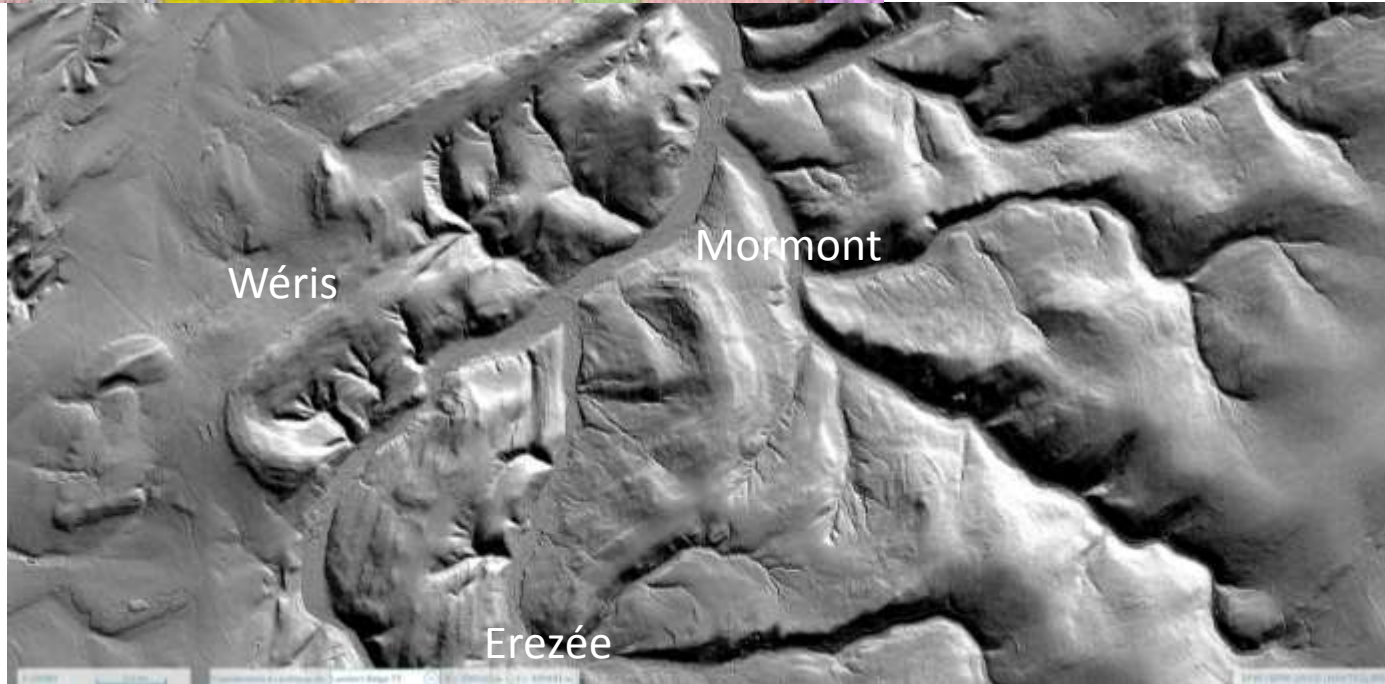
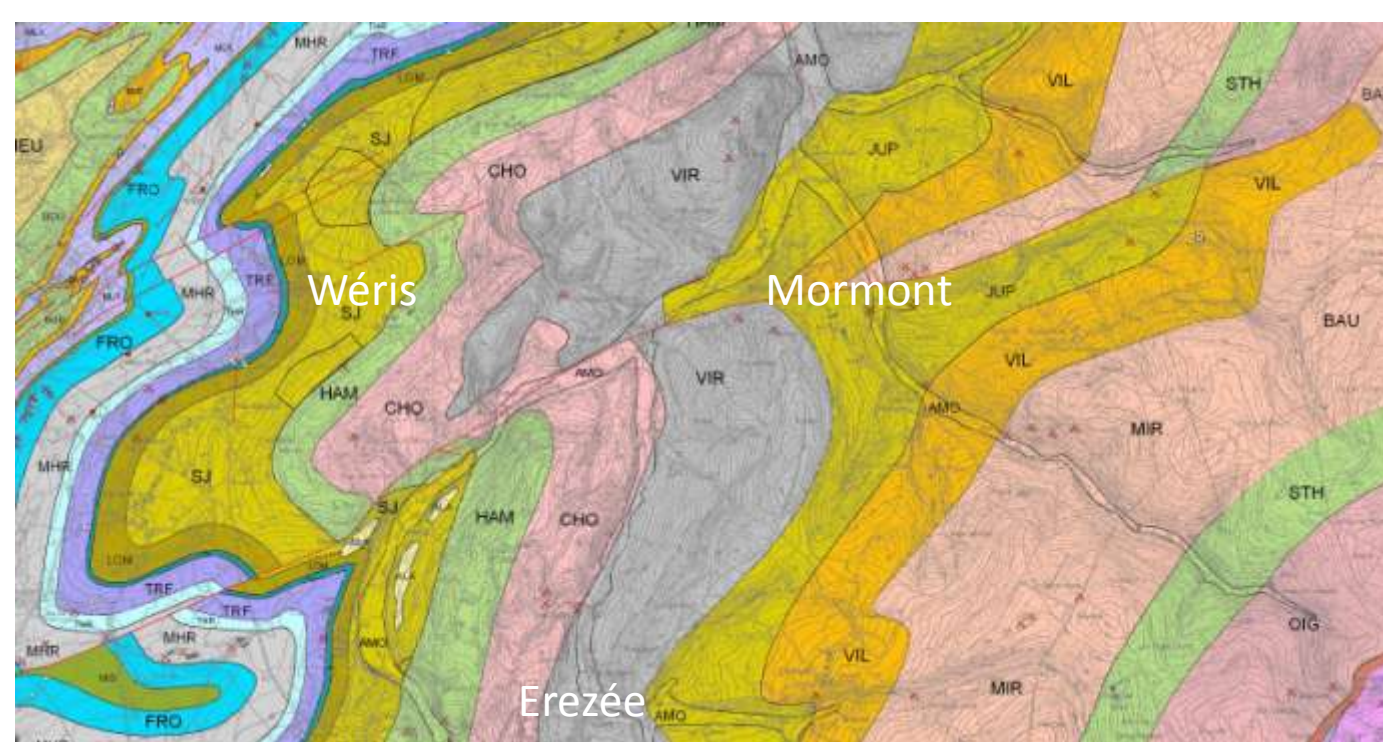


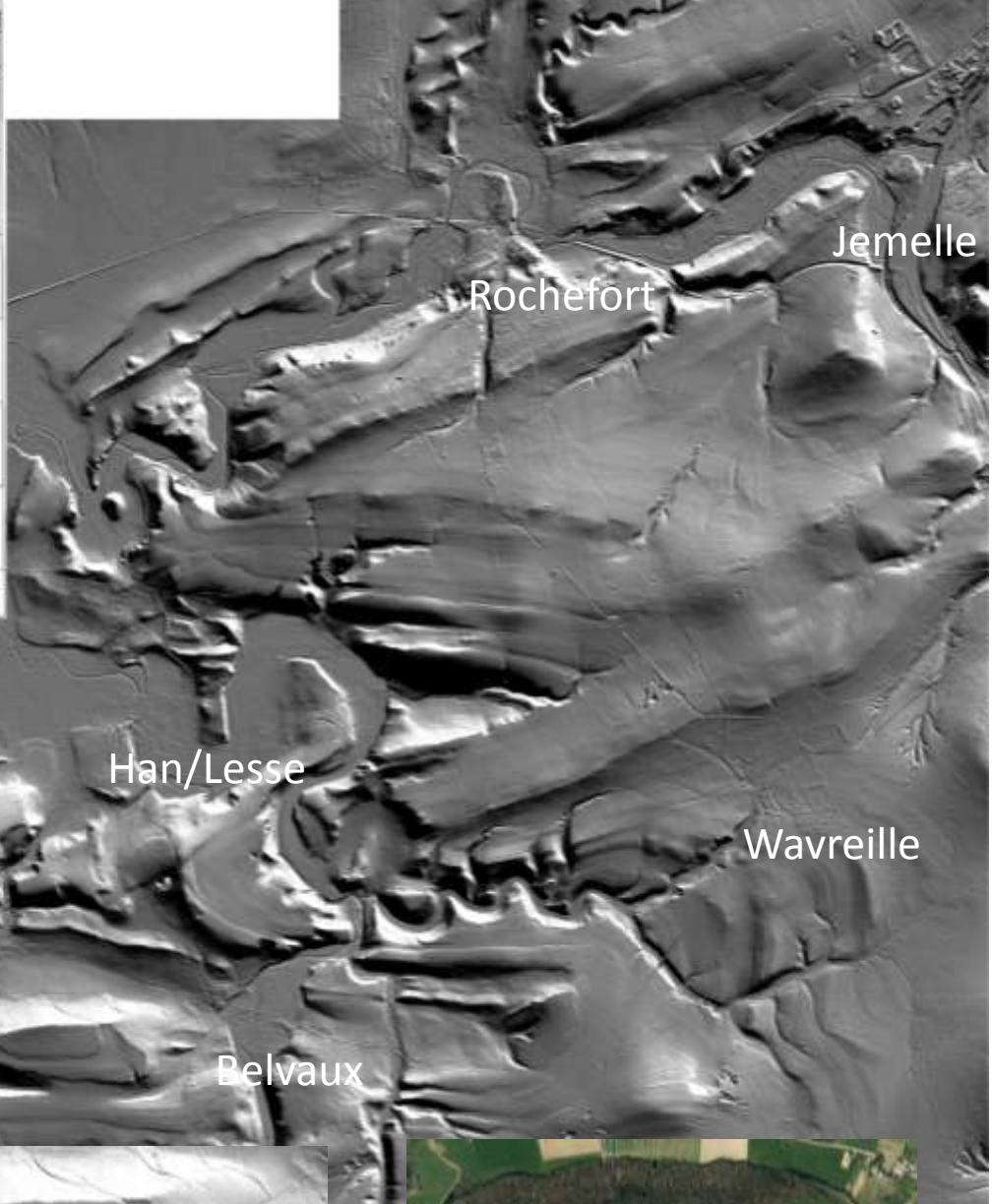
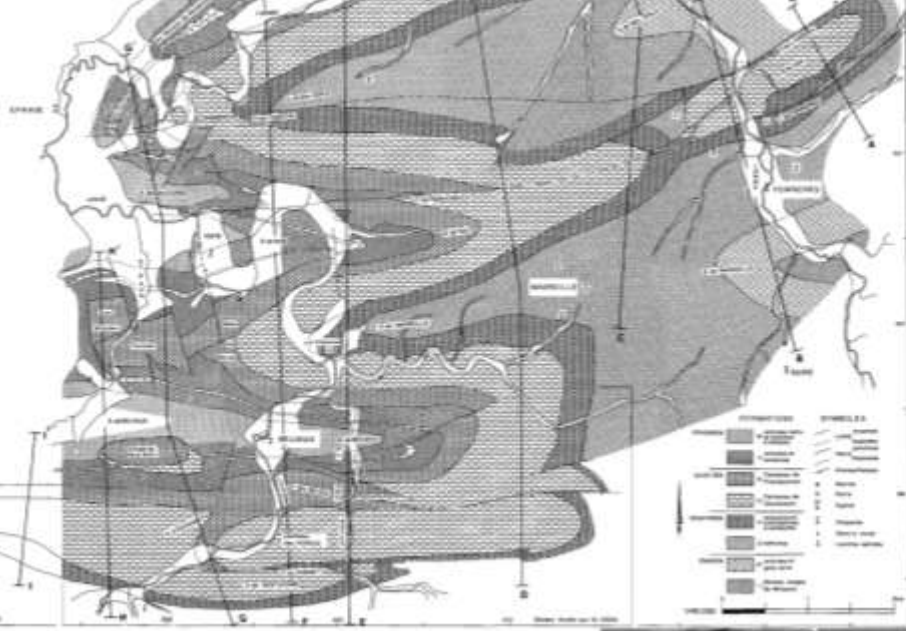


Glissements de terrain:
 -découverte
 -confirmation
 -cartographie, mesures



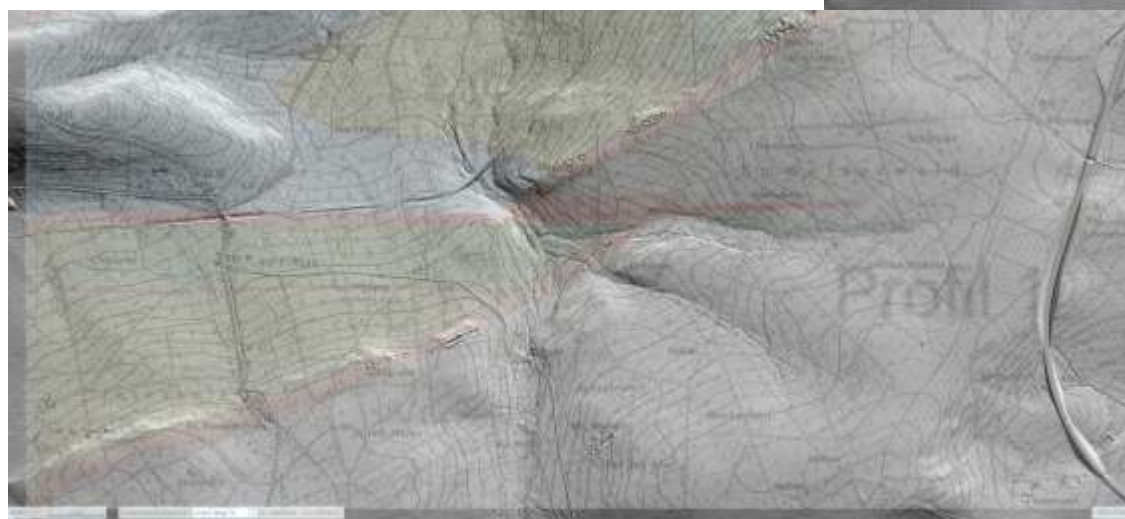
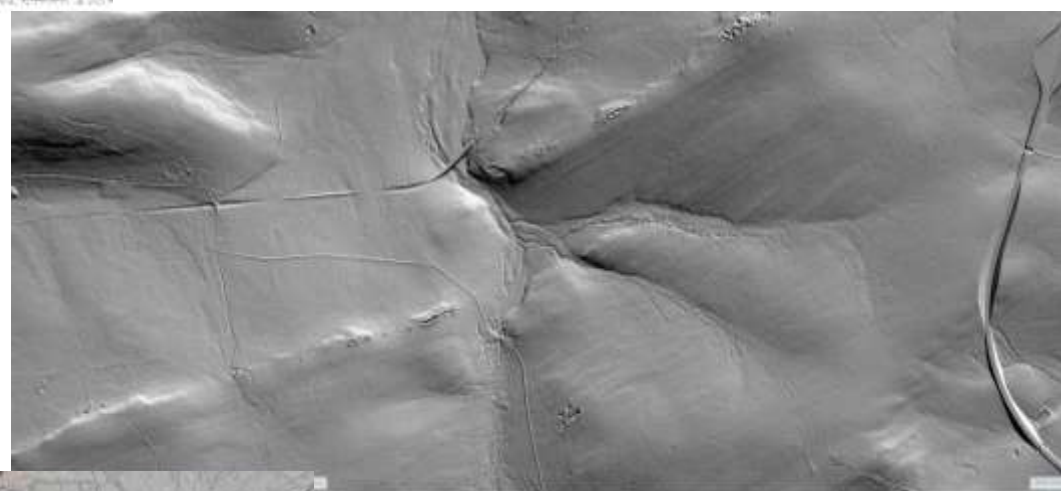
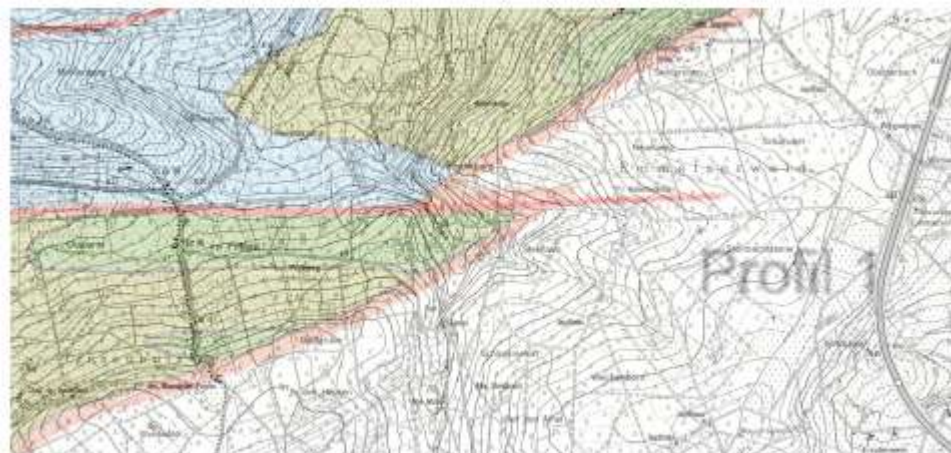


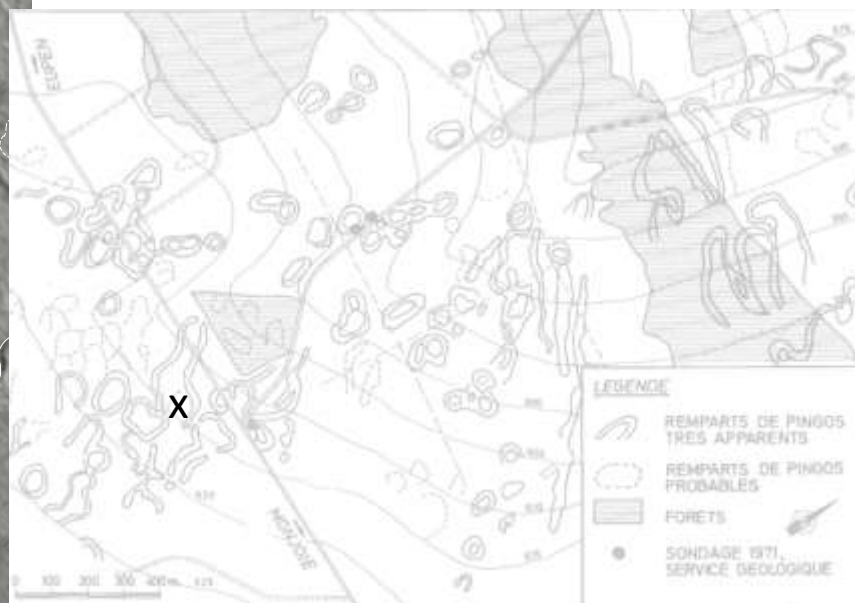
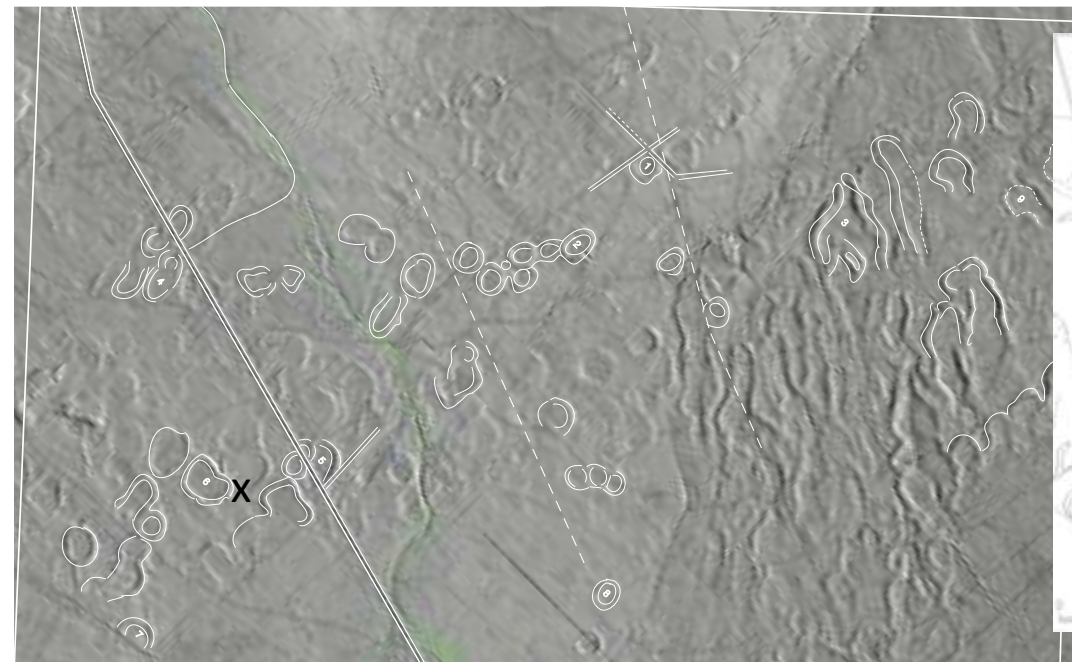




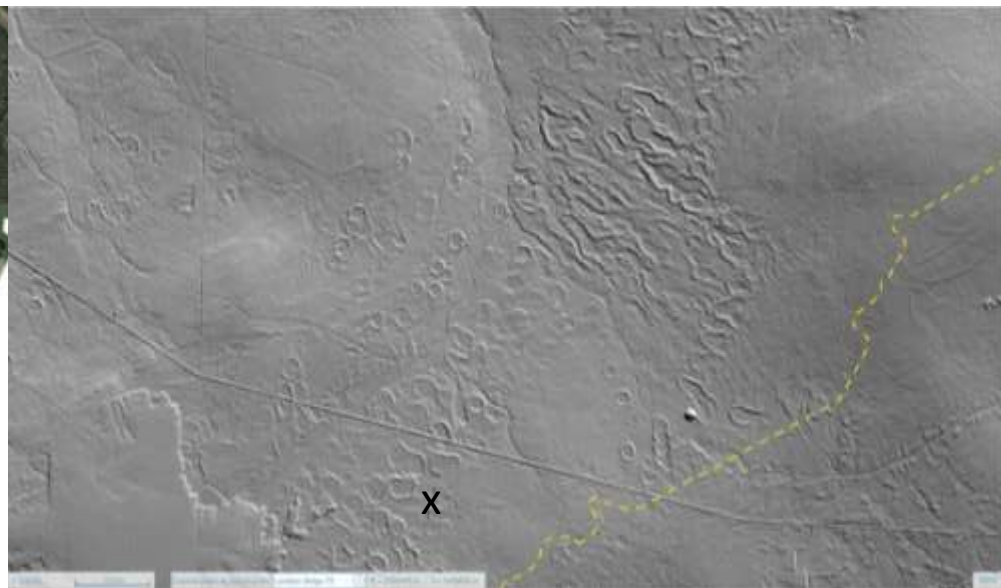
Qualité du MNT : finesse des détails dans la relation géomorphologie – géologie



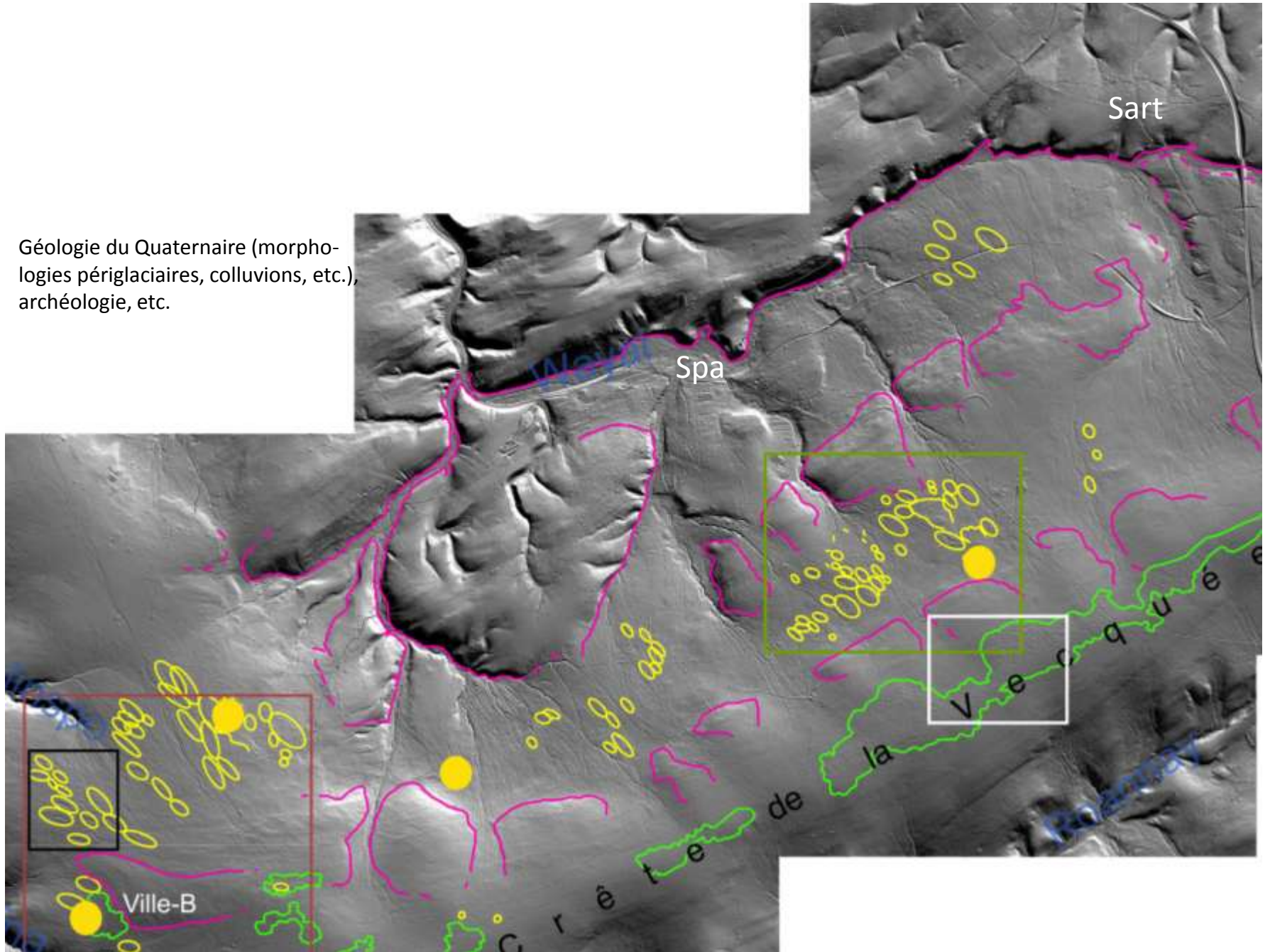


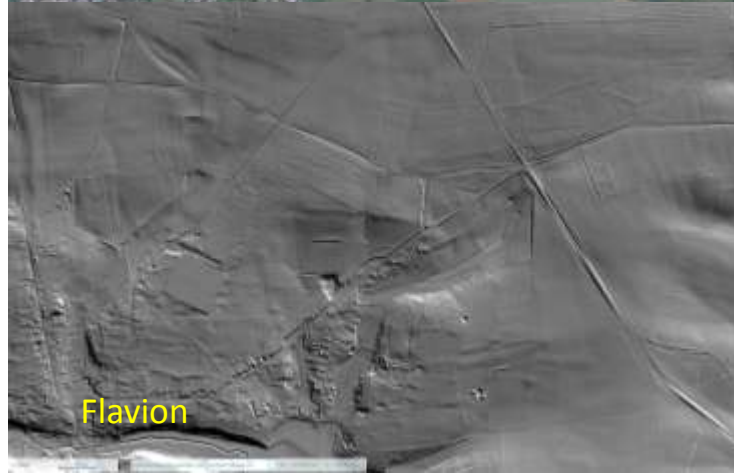
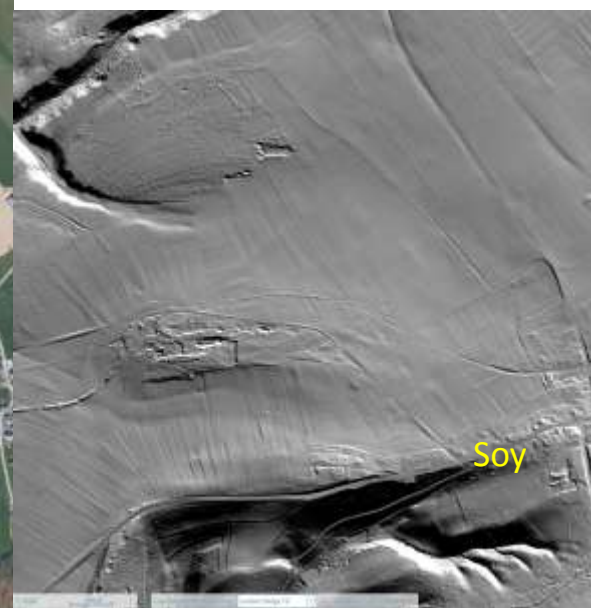


Lithalses de la Brackvenn (comparaison avec Pissart , 1976)



Géologie du Quaternaire (morphologies périglaciaires, colluvions, etc.),
archéologie, etc.





Mont Rigi

